



REDUCING THE RISKS

Which actions are required after an unwanted incident occur on board a vessel? Who is responsible for the follow-up of a component failure? Does everyone involved in maintenance tasks have the right work permits? These are just some of the questions you can answer when using TM Quality & Environment.

This is a powerful and comprehensive group of modules, with the purpose of creating a broad awareness and consciousness about safety throughout your fleet. This will in turn lower the incident repeat frequency and have a positive effect on the safety level of your fleet.

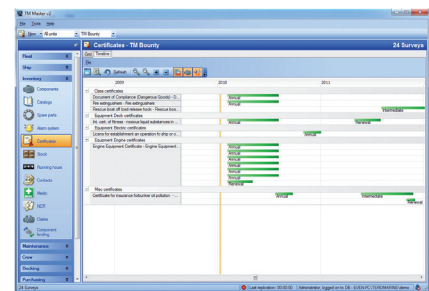
INCIDENTS & OBSERVATIONS

An incident must be dealt with: Registered, followed-up, analysed and reported. Observations and Incidents are categorised to enable the easy sorting and filtering of the different grades of occurrence. Initially, the on board personnel register the incident or observation, and the information is replicated to the office. Authorised personnel either on board or at the office set the required actions and approve the incident report. The on board or office personnel perform the required actions and can close the incident after verification.

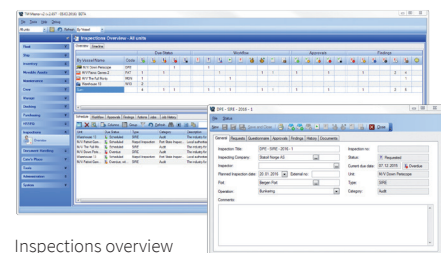
Several consequences can be registered for each incident, thus eliminating the need to describe the same incident again and again for each affected entity (person, equipment, environment etc.) Required actions can be defined early in the incident process, with the option to add as many additional actions as needed. A comprehensive set of KPI's are available to keep track of the most important aspects of undesirable occurrences (Lost Time Injuries, Medical Treatment Cases, First Aid Cases etc.)

The overview panes provide a cross-fleet overview of the incidents and observations, how many there are and which status they have. You can also view the dates of registration for the incidents and the estimated time for completion.

- ✓ Deal with incidents and failures
- ✓ Evaluate consequences and analyse risks
- ✓ Update the voyage e-log
- ✓ Ensure the right work permits
- ✓ Manage all documents



Certificates timeline overview

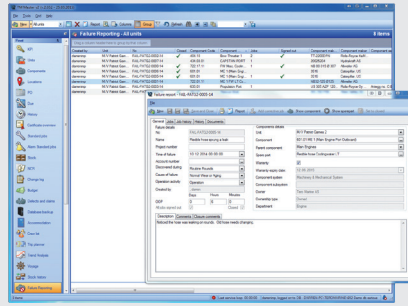


Inspections overview

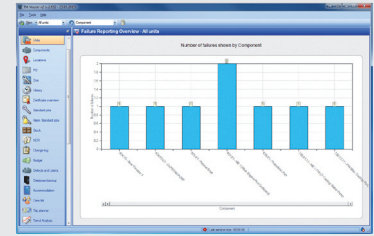


FAILURE REPORTING

The Failure reporting feature allows you to register all your component and spare part failures, giving you an overview of failed equipment in your fleet. The fleet graphical overview provides an instant indication of where your main problem areas lie. You will easily get an overview of the components and spare parts with the most failures. The users can create new corrective actions, attach existing corrective actions and link existing history records to the failures.



Cross fleet trend comparison



Failure reporting overview

CONSEQUENCE EVALUATION

Consequence evaluation provides an accurate and detailed overview of the different levels of consequence in connection with the potential loss of functions of the equipment. The analysis gives the possibility to register consequence classification in compliance with future demands for classification of components.

- Classify components according to the level of consequence to HSEQ, production and costs.
- Flexible risk value system allows prioritising of different categories.
- Risk value automatically calculated for each component.
- Dedicated KPI's for Jobs carried out on High Consequence Components

RISK ANALYSIS

With risk analysis, all identified risk factors can be reviewed and acknowledged prior to a maintenance routine being carried out. The facility to notify the appropriate personnel of proposed additions or changes to the risk evaluation, secures a continual improvement of the safety procedures followed on board.

INSPECTIONS

The new Inspections module has been created to facilitate the process of managing all types of Inspections that are required to maintain the validity of a vessel. The module allows the user to schedule approvals and inspections, as well as any resulting observations and actions required. Inspections at different stages of the workflow are shown in a comprehensive overview matrix, to enable

the user to ascertain the situation for the fleet at a glance.

WORK PERMIT

A flexible work permit system assures that good safety practices and HSEQ standards are followed when carrying out maintenance routines. The system can be used both in conjunction with an existing paper system, and as a stand-alone electronic system.

- Attach work permits to jobs for HSEQ requirements
- Define which crew types have the authority to approve each individual work permit
- Applicants cannot approve their own permit – there must always be two people involved for every work permit
- Paper-based and electronic work permit capability
- Unlimited number of work permits connected to each job
- Work permits saved with job history for possible later review

DOCUMENT MANAGEMENT

The new Document management feature allows you to maintain your document organization throughout your entire fleet. It supports individual versioning and user-right control settings for all documents. Each user has their own personal overview of all relevant documents that may require their attention. Confirmation that a document has been read,

as well as any comments, are stored within the system to be reviewed later. The module facilitates the distribution of documentation, giving the user full control over the availability of individual documents. You can view replication details, where the document is saved and if it has been changed. There is also an overview of document links, conveniently arranged according to which owner type (Component, Certificate, Crew etc.) the documents are connected to. The module uses the powerful "file-stream" technology in Microsoft SQL Server 2012.

VOYAGE E-LOG

Voyage E-Log has been designed to cut down on the reporting requirements between ship and office. Details such as arrival & departure times, cargo loading/discharging times and figures are in constant demand. The entered data may also be used to send reports to authorities and other interested parties. Template and daily reporting functions have been added to the Voyage module to facilitate easier reporting as well as entry of new data. Mail templates allow the users to pre-define email reports which are then automatically populated with data from a specified event within a voyage. There is also a consumption calculation feature which can utilise data entered in both the Voyage E-Log module and the trend module. This substantially cuts down the time and effort involved in reporting to many parties.

READY FOR THE FUTURE



SPECIFICATIONS & REQUIREMENTS:

TM Master is a true object-oriented application, designed and programmed using Microsoft .Net technology. Our databases run on the Microsoft SQL-server, while a well-defined system is preferred for synchronizing data between vessel and shore.

TM Master is designed to work with future operating systems. It is also ideally suited for integration with third party software, such as accounting systems or other ERP software solutions.

SYSTEM REQUIREMENTS TM MASTER V2:

Client: Minimum 4 GB RAM (8 GB recommended), 10 GB free disk space, Windows 7 or 8, .NET 4.0 Framework (.NET 4.5 is recommended). Minimum screen resolution 1280x1024 pixels (recommended 1920x1080 or 1600x1200).

Server: Depending on database size, minimum 8 GB (recommended 12 GB+) / 50 GB free disk space / Windows 2008 R2 server operating system or newer with latest service pack / SQL Server Express 2008 or SQL Server 2008 (SQL Server 2012/2014 recommended), .NET 4.0 Framework Extended (.NET 4.5 recommended).

All new versions of TM Master require .NET 4.0 Framework (.NET 4.5 is recommended). Information related to TM Master Version 2.6 – Dec 2014.

TERO MARINE OFFICES

BERGEN, NORWAY
Tel: +47 55 90 43 00

OSLO, NORWAY
Tel: +47 55 90 43 00

NEWCASTLE, UK
Tel: +44 1670 46 80 80

SINGAPORE
Tel: +65 65 13 25 25

SEATTLE, USA
Tel: +1 (206) 940 4096

ABERDEEN, UK
Tel: +44 7340 305603

TERO MARINE REPRESENTATIVES

RIO, BRAZIL
Tel: +55 (21) 3239 4850

PHILIPPINES
Tel: +63 2812 0742

TOKYO, JAPAN
Tel: +81 3 5157 8757