



TAKE CARE OF YOUR ASSETS

With our user-friendly TM Maintenance module, you can optimise and plan your maintenance work and have complete control over components and spare parts. The module is fully scalable, and can meet the needs of any fleet, regardless of size or complexity.

TM Maintenance also has extensive tools for trend analysis and reporting, allowing the comparison of vessels across entire fleets regarding consumption, emissions and component running hours. New features also allow you to predict your future maintenance work, giving you new tools to forecast maintenance requirements.

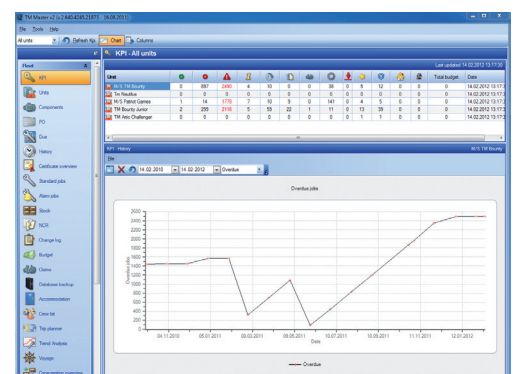
- ✓ Manage all maintenance data
- ✓ Full inventory control
- ✓ Trends and reports
- ✓ Forecast your maintenance needs
- ✓ Movable assets
- ✓ Control docking operations

PLANNED MAINTENANCE

This is a flexible system for planning and managing all maintenance work performed on a vessel or drilling rig – whether it is scheduled, preventive, corrective- or condition based. With the integrated purchasing module, the ordering of spare parts and consumables works like a natural extension of the maintenance functions – enabling users to keep track of both current stock and items on order.

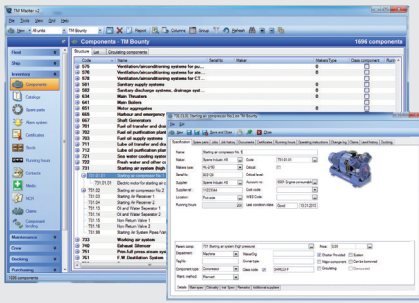
Features included:

- Cross fleet key performance indicators
- Plan and report maintenance activities
- Cross fleet standardisation of jobs
- Pre-warning of jobs due
- Disabling and enabling of jobs
- Postpone jobs to project
- Analysis of maintenance history and reporting



Main menu at the office

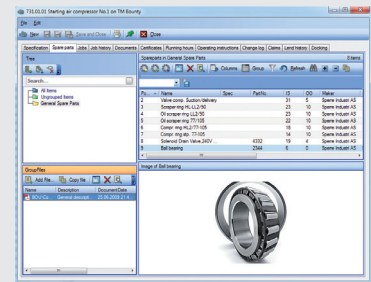




Component structure and details



Cross fleet trend comparison



Spare part details

INVENTORY CONTROL

The inventory control features are powerful tools to manage components, spare parts and consumables effectively. These are all displayed in user-friendly grids, complete with sorting and filtering functions, and provide you with a complete overview.

The details window gives you an overview of all information related to each individual component, including jobs, spare parts, history and certificates.

Available features:

- Spare parts control
- Flexible technical structure for components
- Stock control with consumption overview
- Stock history overview
- Requisition, order processing and delivery control

MOVABLE ASSET

This feature can be added to the TM Maintenance module. Movable assets enables users to move both components and stock from any unit in the fleet to any other unit in the fleet.

Main functions and features:

- Pro forma invoice
- Movable stock locations
- Transfer assets between units (i.e. vessels / warehouse / yard)
- History and all associated information is automatically transferred with assets.

TREND ANALYSIS

This feature enables detection of possible problems before they occur, and ensure the maximum interval between repairs. It also minimises the cost of unscheduled down-time situations, created by equipment failure.

- Register consumption and trends for machinery and on board equipment.
- Compare trends from different equipment on board the same vessel, or between several vessels.
- Calculate emissions of NOX and CO2 based on component specific consumption.
- Compare component running hours with other measurements taken for components.
- Readings displayed in a graphical representation.

REPORTS

TM Maintenance comes with a powerful report engine providing the user with various administrative reports.

Features included:

- Work order
- Maintenance schedule
- Class related jobs
- Critical components and spare parts
- Spare parts below minimum stock
- Alarm due checklist

DOCKING

This feature can be added to the TM Maintenance solution, and covers all the central tasks involved in a dry docking operation – from early planning to execution and reporting. One of the biggest challenges with docking operations, or other large projects, is to keep an overview of all items, equipment and services that have been ordered. TM Docking meets this challenge.

FORECASTING

The Forecasting feature gives the user the opportunity to ascertain if the appropriate maintenance resources are available for the near or distant future. TM Master has for some time had the facility to link spare parts and personnel requirements to jobs. In this version there is also a new facility to specify other costs related to a job.

The TM Master – Forecasting module uses all this information to predict your future spare part requirements, manpower needs and all costs related to your maintenance. The predicted consumption of spare parts is reflected in a predicted stock level, allowing you to ensure that stock levels are maintained. An indication of any quantities which are currently placed on order for the relevant spares, is also available. The predicted manpower requirements can be compared to the planned crew on board, using either information from the crew module or a specified default manning level.

READY FOR THE FUTURE



SPECIFICATIONS & REQUIREMENTS:

TM Master is a true object-oriented application, designed and programmed using Microsoft .Net technology. Our databases run on the Microsoft SQL-server, while a well-defined system is preferred for synchronizing data between vessel and shore.

TM Master is designed to work with future operating systems. It is also ideally suited for integration with third party software, such as accounting systems or other ERP software solutions.

SYSTEM REQUIREMENTS TM MASTER V2:

Client: Minimum 4 GB RAM (8 GB recommended), 10 GB free disk space, Windows 7 or 8, .NET 4.0 Framework (.NET 4.5 is recommended). Minimum screen resolution 1280x1024 pixels (recommended 1920x1080 or 1600x1200).

Server: Depending on database size, minimum 8 GB (recommended 12 GB+) / 50 GB free disk space / Windows 2008 R2 server operating system or newer with latest service pack / SQL Server Express 2008 or SQL Server 2008 (SQL Server 2012/2014 recommended), .NET 4.0 Framework Extended (.NET 4.5 recommended).

All new versions of TM Master require .NET 4.0 Framework (.NET 4.5 is recommended). Information related to TM Master Version 2.6 – Dec 2014.